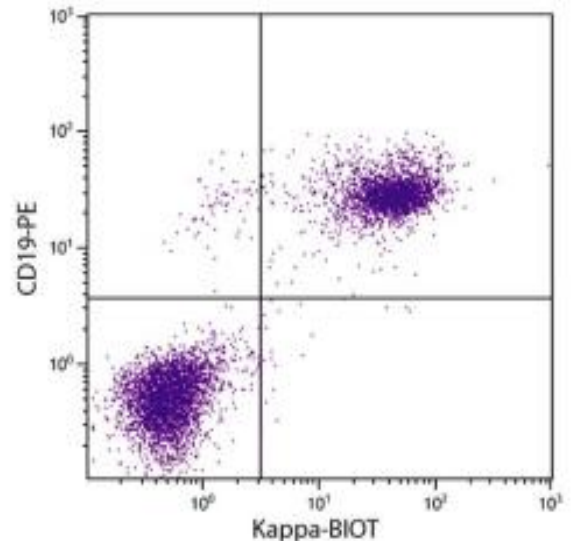
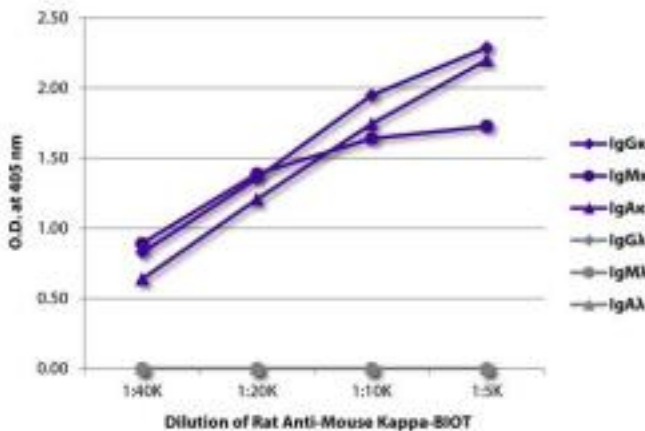


Rat Anti-Mouse Kappa Clone 187.1 Biotin mAb

Catalog No.	CMM031	Quantity:	500 µg
Description:	Rat Anti-Mouse Kappa Clone 187.1 Biotin mAb		
Concentration:	500 µg/mL		
Specificity:	Mouse Kappa		
Immunogen:	MPC-11 immunoglobulin		
Isotype:	Rat (Sprague Dawley) IgG ₁ κ		
Clone:	187.1		
Conjugate:	Biotin		
Formulation:	Supplied in a stock solution in 50% glycerol/50% PBS, pH 7.4; No preservative added		
Isotype Control	Rat IgG ₁ -BIOT		
Applications:	Applications for relevant formats of this clone include ELISA, FLISA, Immunohistochemistry, Immunoprecipitation, and Western Blot.		
Application Notes:	Working dilutions; ELISA 1:5,000 - 1:10,000, Flow Cytometry ≤1 µg/10 ⁶ cells. Since applications vary, you should determine the optimum working dilution for the product that is appropriate for your specific need.		
Storage & Stability:	Store at 2-8°C. For long term storage at -20°C, aliquot into smaller volumes to avoid multiple freeze/thaw cycles.		

ELISA plate was coated with purified mouse IgGκ, IgMκ, IgAκ, IgGλ, IgMλ, and IgAλ. Immunoglobulins were detected with serially diluted Rat Anti-Mouse Kappa-BIOT followed by Streptavidin-HRP.

BALB/c mouse splenocytes were stained with Rat Anti-Mouse Kappa-BIOT and Rat Anti-Mouse CD19-PE followed by Streptavidin-FITC (Cat. No. CPO014).



NOT FOR HUMAN USE. FOR RESEARCH ONLY. NOT FOR DIAGNOSTIC OR THERAPEUTIC USE.

