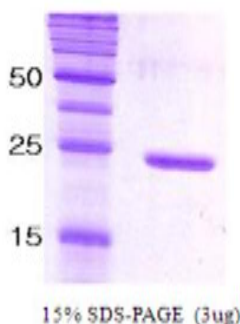


SNAP25

Recombinant *C. elegans* SNAP-25

Catalog No.	CSI15599A CSI15599B	Quantity:	100 µg 500 µg
Alternate Names:	SNAP-25, SUP, super protein. synaptosomal-associated 25 kDa protein, synaptosomal-associated protein, 25 kDa		
Description:	SNAP-25 is a presynaptic plasma membrane protein essential for synaptic vesicle fusion and neurotransmitter release. The membrane proteins SNAP-25, synaptobrevin and syntaxin make up the core complex (SNARE) essential for docking and holding synaptic vesicles at the pre synaptic membrane. SNAP-25 gene was amplified by PCR from <i>C. elegans</i> and cloned into an <i>E. coli</i> expression vector. SNAP-25 was purified by using conventional chromatography techniques.		
Concentration:	1 mg/ml (determined by Bradford assay)		
Gene ID:	6616		
Protein Accession No:	NP_003072.2		
Source:	<i>E. coli</i>		
Molecular Weight:	23 kDa (207 aa), confirmed by MALDI-TOF.		
Formulation:	Liquid in 20 mM Tris-HCl, pH 7.5, + 50 mM NaCl + 5m MDTT + 1 mM EDTA + 10% Glycerol		
Purity:	> 95% by SDS - PAGE		
Amino Acid Sequence:	MSGDDDIPEG LEAINLKMNA TTDDSLESTR RMLALCEESK EAGIKTLVML DDQGEQLERC EGALDTINQD MKEAEDHLKG MEKCCGLCVL PWNKTDDFEK TEFAKAWKKD DDGGVISDQP RITVGDSSMG PQGGYITKIT NDAREDEMDE NVQQVSTMVG NLRNMAIDMS TEVSNQNRQL DRIHDKAQSN EVRVESANKR AKNLITK		
Storage & Stability:	Can be stored at +4°C short term (1-2 weeks). For long term storage, aliquot and store at -20°C or -80°C. Avoid repeated freezing and thawing cycles.		



NOT FOR HUMAN USE. FOR RESEARCH ONLY. NOT FOR DIAGNOSTIC OR THERAPEUTIC USE.

