

Mouse Anti-Beta Actin Clone BA3R mAb Loading Control

Catalog No.	CSI20572A	Quantity:	50 µg
	CSI20572B		100 µg
	CSI20572C		200 µg

Description: Mouse Anti-Beta Actin Clone BA3R mAb Loading Control

Concentration: 1.0 mg/ml

Specificity: Recognizes native and denatured forms of beta-Actin (approx. 42kDa)

Host: Mouse

Immunogen: Beta-Actin N-terminal peptide-KLH conjugates

Isotype: IgG2b

Clone: BA3R

Formulation: Liquid in 10 mM PBS, pH 7.2.

Purification: Protein A affinity chromatography from mouse ascites fluid

Applications: Dot Blot
ELISA
Immunostaining
Western Blot

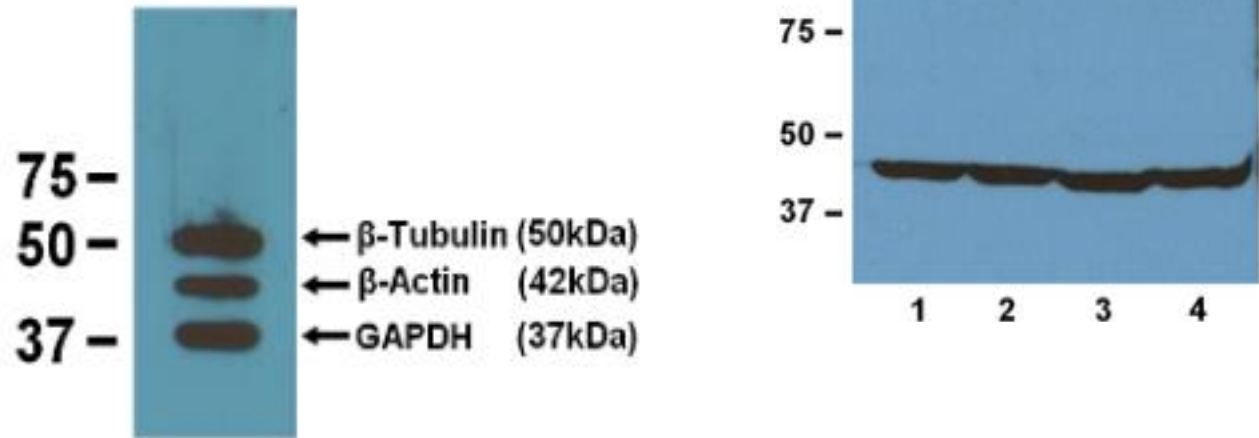
Application Notes: Wesern Blot (with ECL): working dilution of 1:1,000-10,000 (incubate for one hour at room temperature).
Immunostaining: working dilution of 1:500-2,000.
The optimal concentration should be determined by the user for each specific application.

Storage & Stability: Store at 2-4°C (add 0.1% NaN₃) for several days to weeks, and at -20°C for longer periods. **Avoid repeated freeze-thaw cycles.**



Control mAbs against 10 μ g/lane of mouse brain tissue lysates. Anti- β -Tubulin at 1:2000. Anti- β -Actin at 1:1000. Anti-GAPDH at 1:5000.

1:1,000 (1 μ g/mL) Ab dilution used in WB of 20 μ g/lane tissue lysates from human (1), mouse (2), rat (3), and rabbit (4)



NOT FOR HUMAN USE. FOR RESEARCH ONLY. NOT FOR DIAGNOSTIC OR THERAPEUTIC USE.