

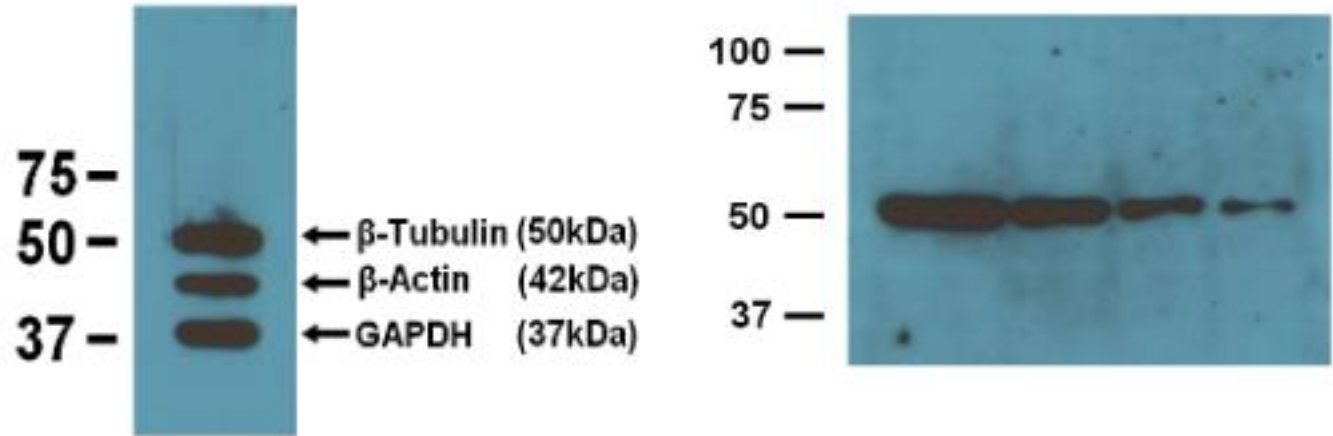
Mouse Anti-Beta Tubulin Clone BT7R mAb Loading Control

Catalog No.	CSI20576A CSI20576B CSI20576C	Quantity:	50 µg 100 µg 200 µg
Description:	Mouse Anti-Beta Actin Clone BA3R mAb Loading Control		
Concentration:	1.0 mg/ml		
Specificity:	Recognizes native and denatured forms of β-Tubulin (~50kDa)		
Host:	Mouse		
Immunogen:	β-Tubulin N-terminal peptide-KLH conjugates		
Isotype:	IgG2a		
Clone:	BT7R		
Formulation:	Liquid in 10 mM PBS, pH 7.2, + 0.05% NaN ₃		
Purification:	Protein A affinity chromatography from mouse ascites fluid		
Cross-Reactivity:	β-Tubulin from human, monkey, mouse, rat, rabbit, chicken. β-Tubulin from other species may also be detectable.		
Applications:	Dot Blot ELISA Immunostaining Western Blot		
Application Notes:	WB (with ECL): 1:2000-5000 dilution (incubate for 1 hour at room temperature). For best results with other assays (e.g.: Dot blot, ELISA, etc), please determine optimal working dilution by titration test.		
Storage & Stability:	Store at -20°C for 2 years or more. Centrifuge after first thaw to maximize product recovery. Aliquot to avoid repeated freeze-thaw cycles . Store aliquots at 4°C (add 0.05% NaN ₃ if not included) for several days to weeks.		



Control mAbs against 10µg/lane of mouse brain tissue lysates. Anti-β-Tubulin at 1:2000. Anti-β-Actin at 1:1000. Anti-GAPDH at 1:5000.

1:4000 (0.25 µg/ml) Ab dilution used in WB of 10 µg/lane (1), 5 µg/lane (2), 2.5 µg/lane (3), 1.25 µg/lane (4) mouse brain tissue lysates



NOT FOR HUMAN USE. FOR RESEARCH ONLY. NOT FOR DIAGNOSTIC OR THERAPEUTIC USE.