

APAF1

Synthetic Human Apoptotic Peptidase Activating Factor 1 (aa 12-28)(NT) Blocking Peptide

Catalog No. PX043BP **Quantity:** 50 µg
Alternate Names: CED4, apoptotic protease activating factor 1
Description: Amino acids 12 to 28 of human Apaf-1.

This gene encodes a cytoplasmic protein that initiates apoptosis. This protein contains several copies of the WD-40 domain, a caspase recruitment domain (CARD), and an ATPase domain (NB-ARC). Upon binding cytochrome c and dATP, this protein forms an oligomeric apoptosome. The apoptosome binds and cleaves caspase 9 preproprotein, releasing its mature, activated form. Activated caspase 9 stimulates the subsequent caspase cascade that commits the cell to apoptosis. Alternative splicing results in several transcript variants encoding different isoforms.

Gene ID: 317

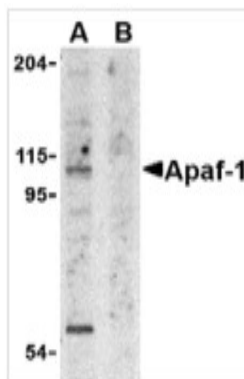
Application: The peptide is used for blocking the activity of anti-Apaf-1. Incubating the peptide with equal volume of antibody for 30 min at 37°C usually completely blocks the antibody activity in Western blotting.

Formulation: It is supplied as 200 µg/ml, 50 µg/vial, in PBS pH7.2 (10 mM NaH₂PO₄, 10 mM, Na₂HPO₄, 130 mM NaCl) containing 0.1% bovine serum albumin and 0.02% sodium azide.. **Precaution:** Sodium azide is a poisonous and hazardous substance which should be handled by trained staff only.

Sequence: HREALEKDIKTSYIMDHC

Storage & Stability: Store at -20°C, stable for one year.

Apaf1 (C-Terminus) Peptide



NOT FOR HUMAN USE. FOR RESEARCH ONLY. NOT FOR DIAGNOSTIC OR THERAPEUTIC USE.



Cell Sciences[®]
 480 Neponset Street
 Bldg 12A
 Canton, MA 02021

Toll Free: 888-769-1246
 Phone: 781-828-0610
 Fax: 781-828-0542

E-mail: info@cellsciences.com
 Website: www.cellsciences.com