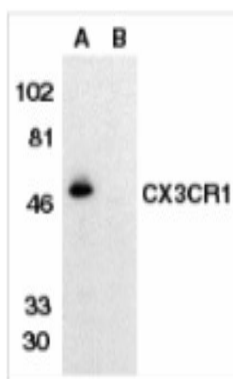


CX3CR1

Synthetic Human Chemokine (C-X₃-C motif) Receptor 1 (aa 175-188) (EL) Blocking Peptide

Catalog No.	PX166BP	Quantity:	50 µg
Alternate Names:	CCRL1, CMKBRL1, CMKDR1, GPR13, GPRV28, V28, G protein-coupled receptor 13, chemokine (C-C) receptor-like 1, chemokine (C-X3-C) receptor 1		
Description:	Fractalkine is a transmembrane protein and chemokine involved in the adhesion and migration of leukocytes. The protein encoded by this gene is a receptor for fractalkine. The encoded protein also is a coreceptor for HIV-1, and some variations in this gene lead to increased susceptibility to HIV-1 infection and rapid progression to AIDS. Four transcript variants encoding two different isoforms have been found for this gene.		
Gene ID:	1524		
Application:	The peptide is used for blocking the activity of anti-CX ₃ CR1. The peptide with equal volume of antibody for 30 min at 37°C usually completely blocks the antibody activity in Western blotting.		
Formulation:	It is supplied as 200 µg/ml, 50 µg/vial , in PBS pH7.2 (10 mM NaH ₂ PO ₄ , 10 mM, Na ₂ HPO ₄ , 130 mM NaCl) containing 0.1% bovine serum albumin and 0.02% sodium azide.. Precaution: Sodium azide is a poisonous and hazardous substance which should be handled by trained staff only.		
Sequence:	CLGDYPEVLQEIWPV		
Storage & Stability:	Store at -20°C, stable for one year.		

CX₃CR1 (Extracellular Loop) Peptide



NOT FOR HUMAN USE. FOR RESEARCH ONLY. NOT FOR DIAGNOSTIC OR THERAPEUTIC USE.

