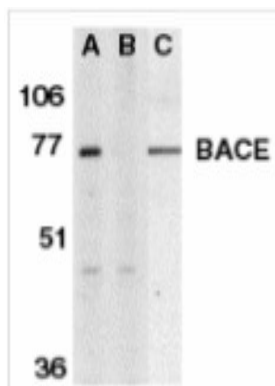


## BACE1

### Synthetic Human Beta-site APP Cleaving Enzyme 1 (aa 485-501)(CT) Blocking Peptide

<b>Catalog No.</b>	PX184BP	<b>Quantity:</b>	50 µg
<b>Alternate Names:</b>	AAA, ABETA, ABPP, AD1, APPI, CTFgamma, CVAP, PN2, A4 amyloid protein, amyloid beta A4 protein, amyloid-beta protein, beta-amyloid peptide, cerebral vascular amyloid peptide, peptidase nexin-II, protease nexin-II		
<b>Description:</b>	Cerebral deposition of amyloid beta peptide is an early and critical feature of Alzheimer's disease. Amyloid beta peptide is generated by proteolytic cleavage of amyloid precursor protein (APP) by two proteases, one of which is the protein encoded by this gene. The encoded protein, a member of the peptidase A1 protein family, is a type I integral membrane glycoprotein and aspartic protease that is found mainly in the Golgi.		
<b>Gene ID:</b>	23621		
<b>Application:</b>	The peptide is used for blocking the antibody activity of BACE. The peptide with equal volume of antibody for 30 min at 37°C usually completely blocks the antibody activity in Western blotting.		
<b>Formulation:</b>	It is supplied as 200 µg/ml, 50 µg/vial , in PBS pH7.2 (10 mM NaH <sub>2</sub> PO <sub>4</sub> , 10 mM, Na <sub>2</sub> HPO <sub>4</sub> , 130 mM NaCl) containing 0.1% bovine serum albumin and 0.02% sodium azide.. <b>Precaution:</b> Sodium azide is a poisonous and hazardous substance which should be handled by trained staff only.		
<b>Sequence:</b>	NH <sub>2</sub> -CLRQQHDDFADDISLLK-OH		
<b>Storage &amp; Stability:</b>	Store at -20°C, stable for one year.		

BACE (C-Terminus) Peptide



NOT FOR HUMAN USE. FOR RESEARCH ONLY. NOT FOR DIAGNOSTIC OR THERAPEUTIC USE.

