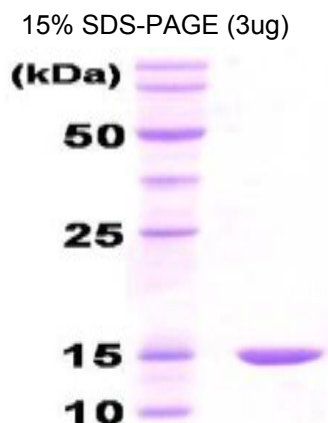


HSPE1

Recombinant Human GroES/Heat Shock 10 kDa Protein 1

Catalog No.	CSI15608A CSI15608B	Quantity:	100 µg 500 µg
Alternate Names:	EPF, CPN10, GROES, HSP10		
Description:	GroES protein is the co-chaperonin of GroES in <i>E.coli</i> and assists protein folding. GroEL mediated folding requires the co-chaperonin GroES which is essential for viability. GroES is composed of a single heptameric ring of 10 kDa subunits that binds to the ends of the GroEL cylinder. GroES gene was amplified by PCR from <i>E.coli</i> and cloned into an expression vector. This protein was overexpressed in <i>E.coli</i> and was purified by using conventional chromatography techniques.		
Concentration:	1 mg/ml (determined by Bradford assay)		
Gene ID:	3336		
Protein Accession No:	NP_418566		
Source:	<i>E. coli</i>		
Molecular Weight:	10.4 kDa (97aa), confirmed by MALDI-TOF		
Formulation:	Liquid. In 25 mM Tris buffer (pH 7.5) containing 100 mM NaCl + 5 mM DTT, 10% glycerol		
Purity:	> 95% by SDS - PAGE		
Amino Acid Sequence:	MNIRPLHDRV IVKRKEVETK SAGGIVLTGS AAKSTRGEV LAVGNRILE NGEVKPLDVK VGDIVFNDG YGVKSEKIDN EEVLIMSESD ILAIVEA		
Storage & Stability:	Can be stored at +4°C short term (1-2 weeks). For long term storage, aliquot and store at -20°C or -80°C. Avoid repeated freezing and thawing cycles.		



NOT FOR HUMAN USE. FOR RESEARCH ONLY. NOT FOR DIAGNOSTIC OR THERAPEUTIC USE.

